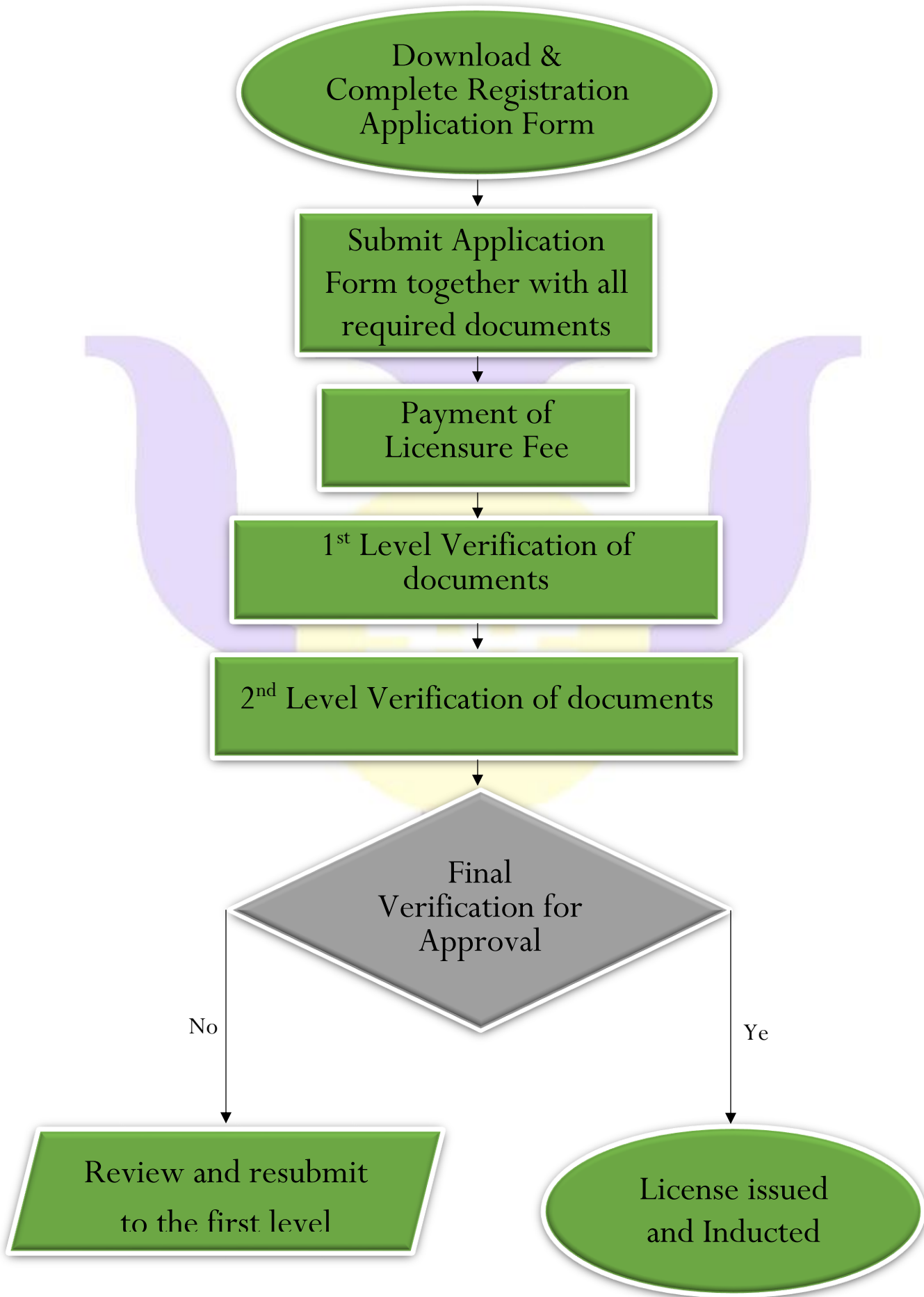


Ghana Psychology Council Registration Process



REQUIRED DOCUMENTS FOR REGISTRATION

1. Fully filled forms
2. Copy of educational certificates
3. Original transcripts
4. Curriculum Vitae
5. Passport sized picture with white background (2). Write full name and sign behind both.
6. Reference letters (2)
7. Internship logbook
8. Payment slip / evidence of payment slip (all payment must be made at the bank)

FEES

1. Professionals– GHc300
2. Provisional members–
 - a. Professionals– GHc250
3. Paraprofessionals– GHc250
4. Psychology Assistants– GHc150
5. Lay Practitioners– GHc200

CATEGORIES AS PER HIGHEST EDUCATIONAL QUALIFICATION

1. Professionals– PhD/Psych. D. or Masters in Psychology/Counselling.
2. Provisional members-
 - a. Professionals– Foreign trained PhD. Psych. D. or Masters in Psychology/Counselling about to do internship.
3. Paraprofessionals– BA/HND in Counselling.
4. Psychology Assistants– BA in Psychology.
5. Lay Practitioners– Certificate in Counselling.